

# LED 2500 T INSTALLATION GUIDE

---

## LED 2500 T SHORT (235MM)

The short version of the LED 2500 T is compatible with lenses of:

f 31mm / 60°

f 44mm / 40°

f 70mm / 25°

## LED 2500 T LONG (289MM)

The long version of the LED 2500 T is compatible with lenses of:

f 96mm / 20°

f 125mm / 15°

## MANUFACTURER

opticalight® gmbh, Haldenbachstrasse 10, CH-8006 Zürich

## INSTALLATION

Installation only by qualified personnel.

The installer is solely responsible for the correct installation according to current standards and norms.

The projector may be used indoors

Tools required: Allen key 5mm

## WARNINGS

Minimum distance to illuminated surface: 1 m.

Don't look directly into active light source.

The luminaire is to be positioned in such a way that a longer view into active light in a shorter distance than 1.6 m is not to be expected.

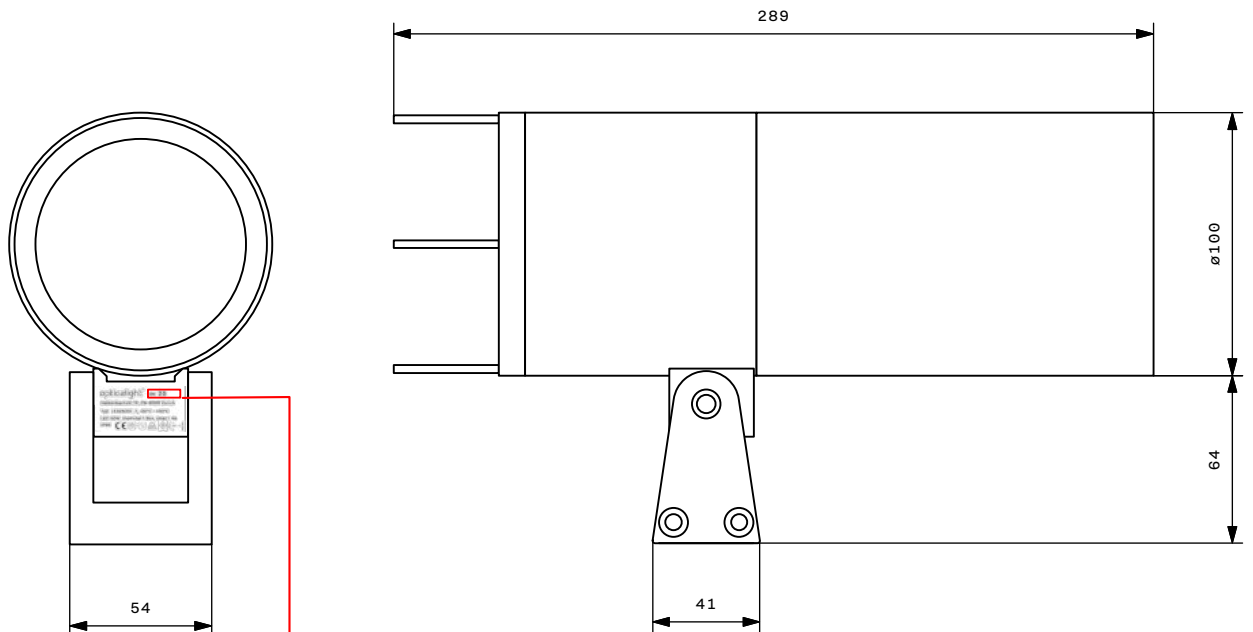
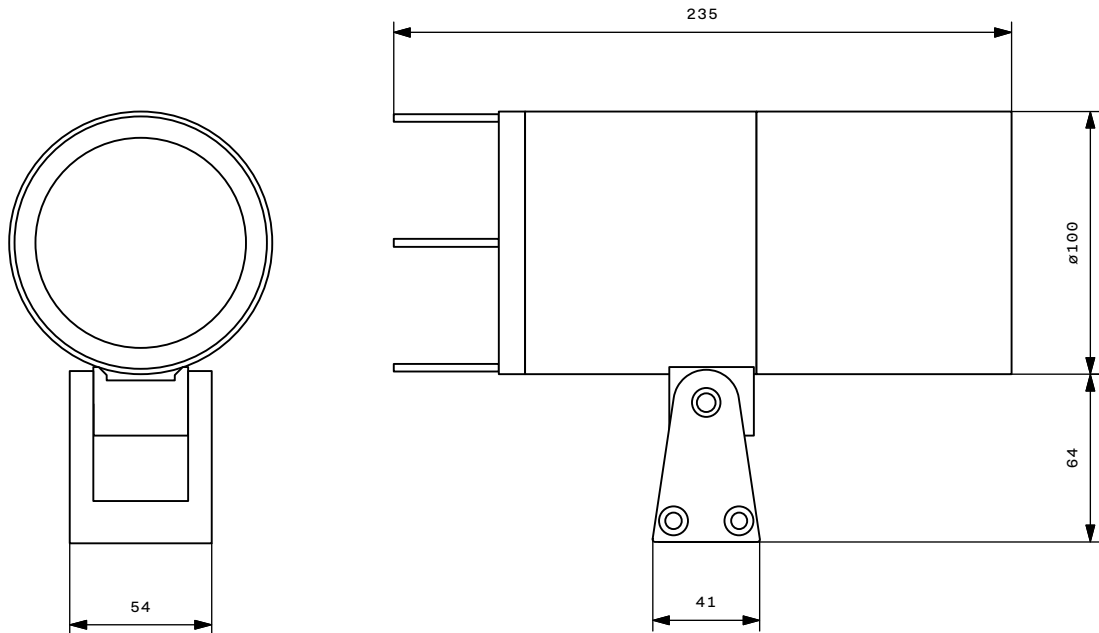
Class III luminaires may only be connected to supplies of protective low voltage (SELV)

Repairs only carried out by manufacturer.

Replacement of light source only by manufacturer or by technician authorised by manufacturer or similar qualified personnel.

## RECYCLING:

Follow applicable laws for disposal. No disposal in domestic waste.



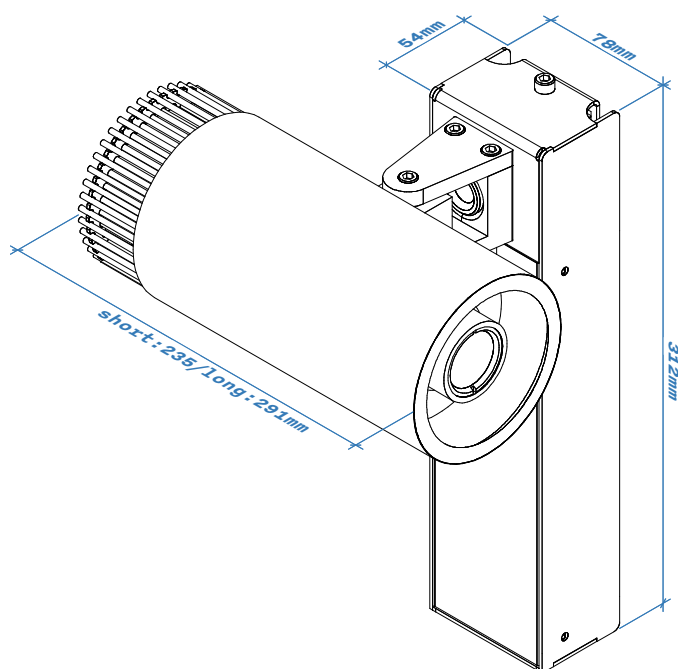
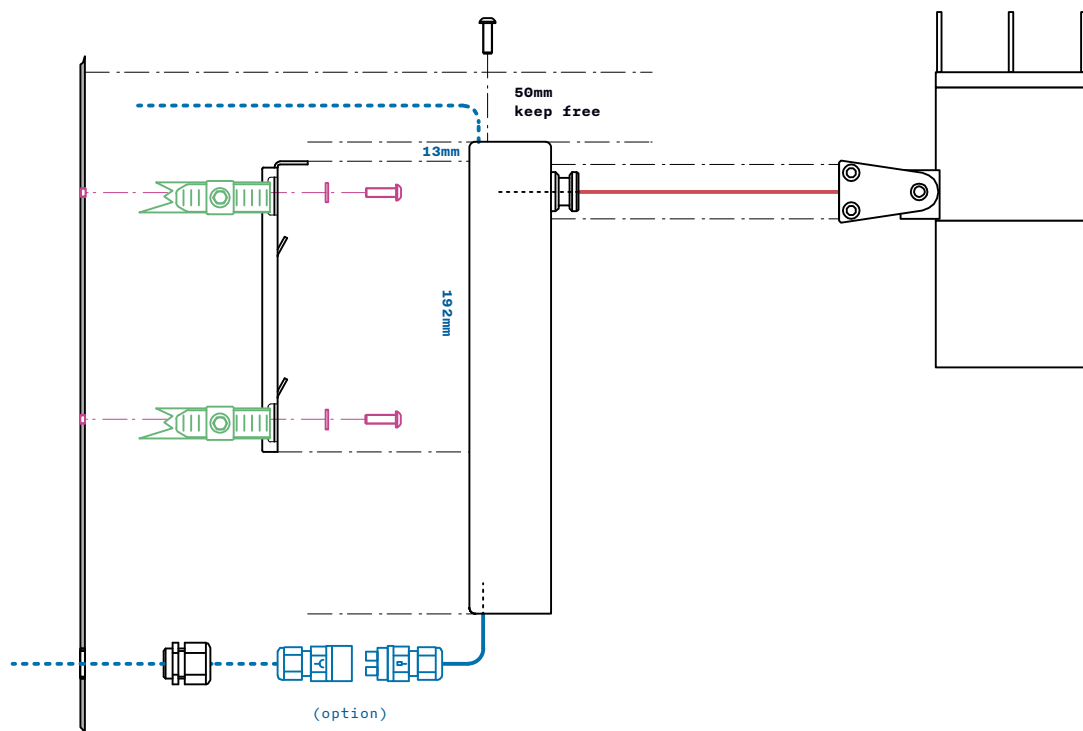
Serial number of projector

opticalight® SN: 20  
 Haldenbachstr.10, CH-8006 Zürich  
 Typ: LED2500T,  $t_a$  -20°C ~ +40°C  
 LED 50W, Inominal 1.35A, I<sub>max</sub> 1.4A  
 IP65

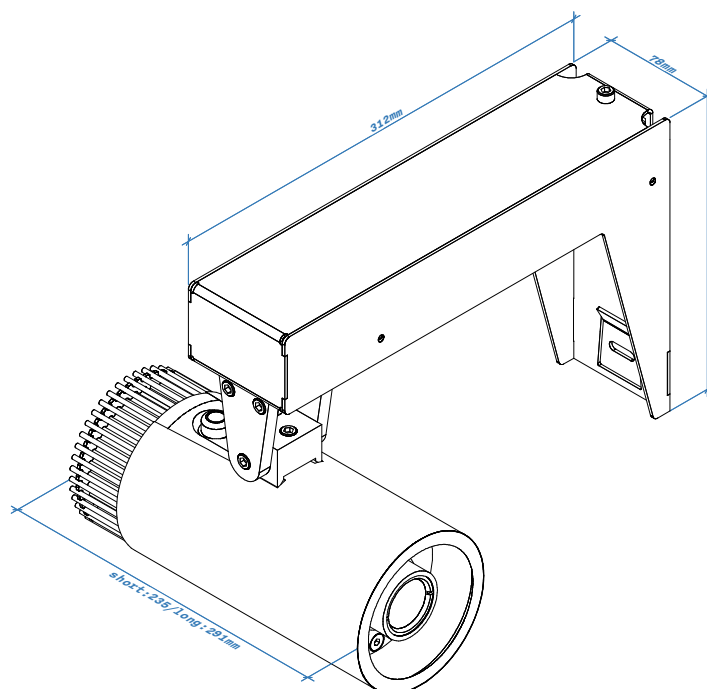
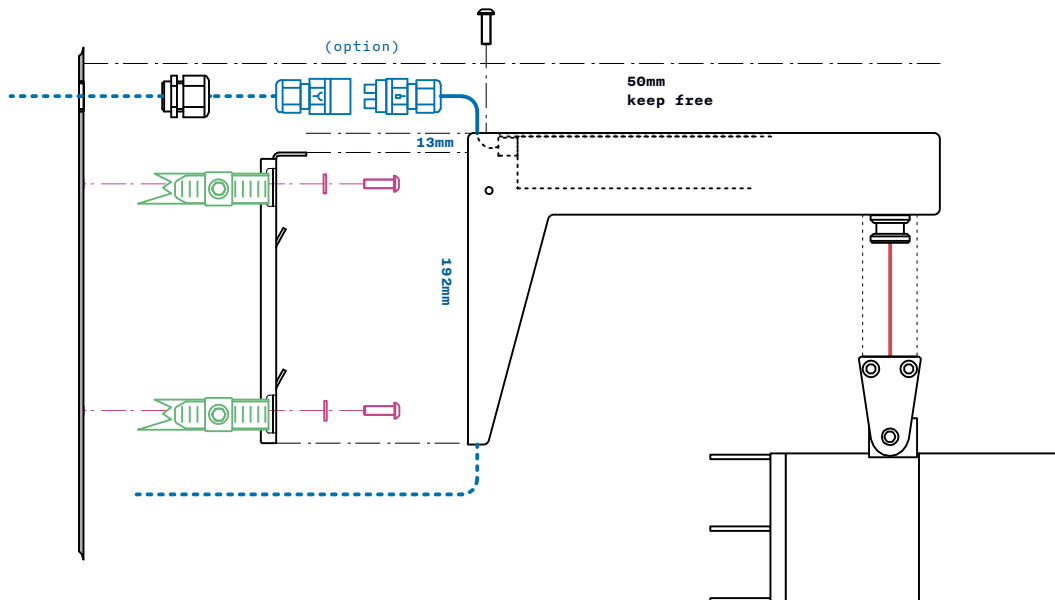


opticalight®

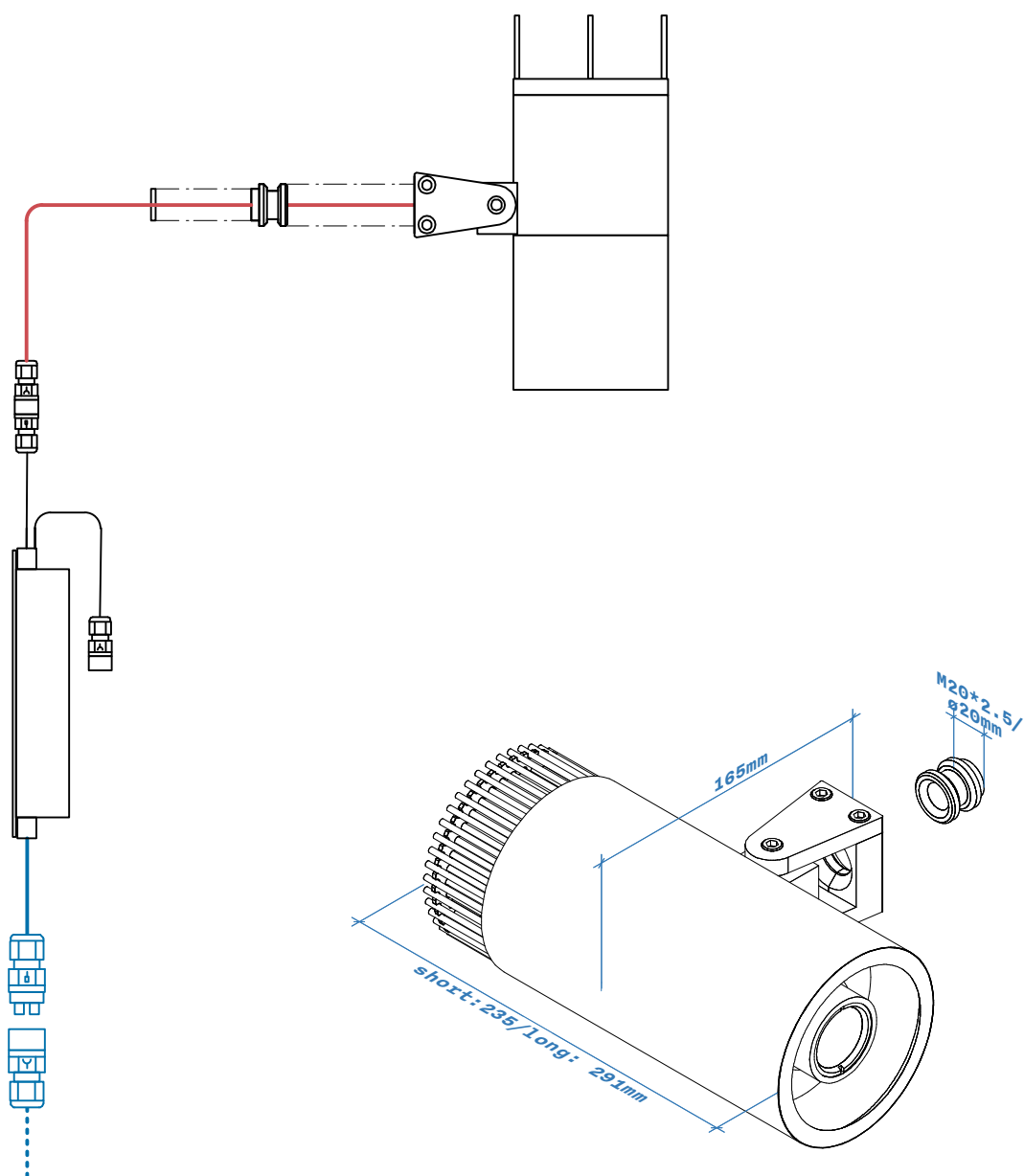
## LED 2500 TS MOUNING STRAIGHT



## LED 2500 TA MOUNTING ANGULAR



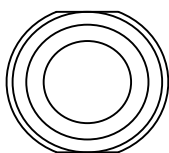
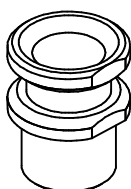
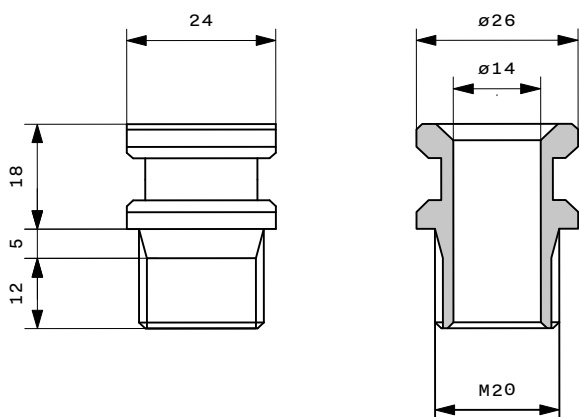
## LED 2500 TE MOUNTING EXTERNAL



## LED 2500 TE MOUNTING EXTERNAL PIVOT PIN

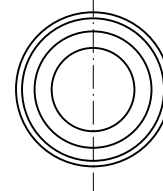
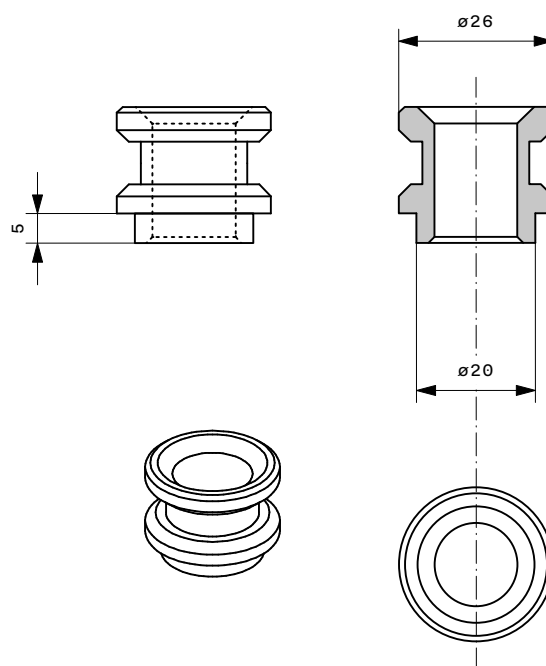
Pivot Pin ID603

Material CRN 1.4305

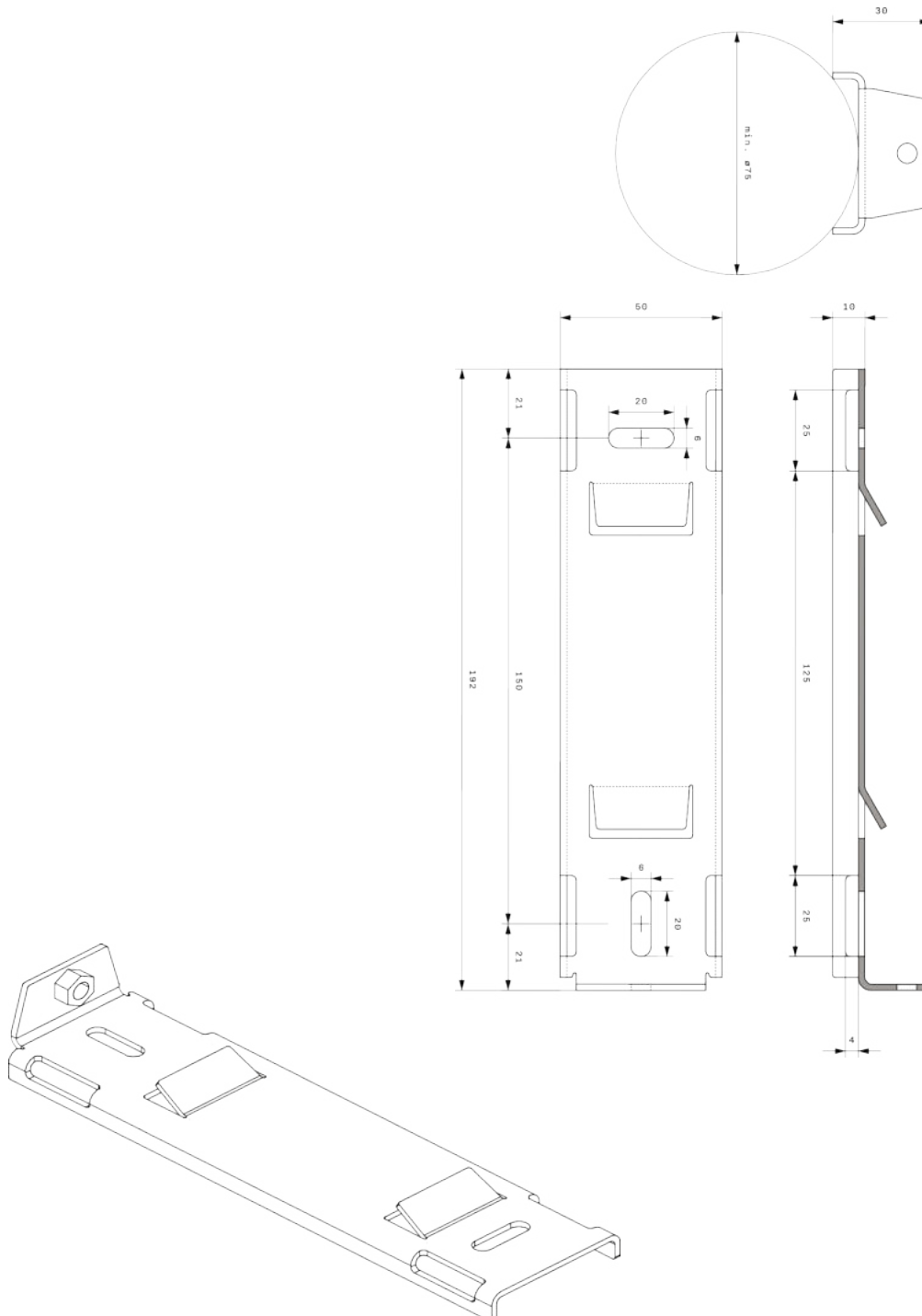


Pivot Pin short ID741

Material CRN 1.4305



## LED 2500 TS & TA STRAIGHT & ANGULAR MOUNTING BRACKET ID788



## LED 2500 TE WIRING

Projector LED 2500 T

Cable (length 300mm approx.)

Clevis joint (3\* M6\*50mm)

Connector Techno® TECHNO THB.381.A2A /B2A, IP68, 2-pole

pin 1 = +Vo > brown

pin 2 = - Vo > blue

*Version 1:* Pivot pin M20\*2.5 bolted and secured with high-strength threadlocker (such as Loctite 2701) on mounting surface

*Version 2:* Pivot pin short, welded on mounting surface

Connector Techno® TECHNO THB.381.A2A /B2A, IP68, 2-pole

pin 1 = +Vo > red

pin 2 = -Vo > black

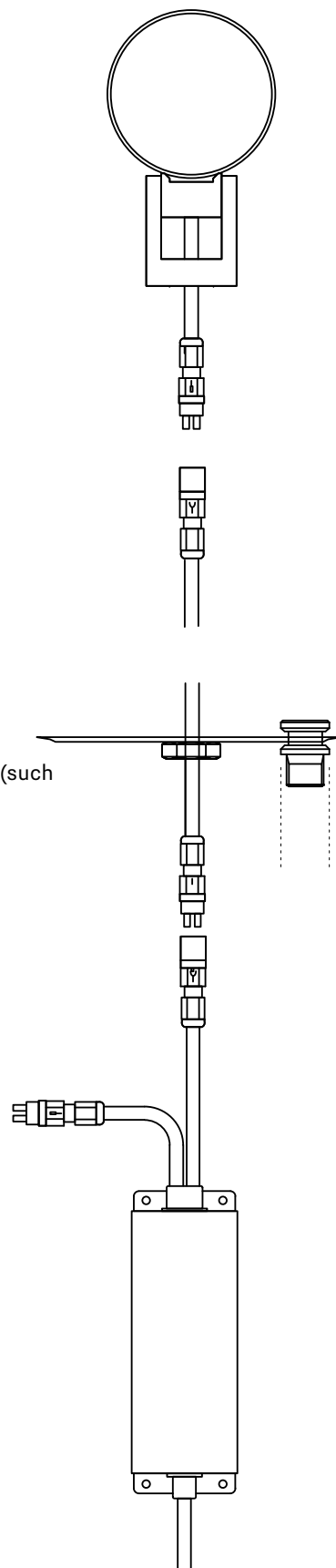
Dali connection

Connector Techno® TECHNO THB.381.A2A /B2A, IP68, 2-pole

pin 1 = DA+

pin 2 = DA-

Recommended control gear: Meanwell ELG-75-36DA-3Y  
(see manufacturer's spec. sheet)





## LED 2500 T HANDLING

### COMPONENTS

- 1 RAL/DB-colour sleeve
- 2 optic housing
- 3 lens
- 4 lens holding fixture
- 5 rotating ring
- 6 insertion magnet / 3D-Fokus (3x)
- 7 rotation locking screw (3x)
- 8 sealing ring
- 9 serial number
- 10 clevis joint
- 11 alignment locking screw (3x)
- 12 mask / Gobo
- 13 insertion marker-groove
- 14 LED modul

### ASSEMBLY

Don't exchange components between projectors!

Each projector is unique and all relevant components of one projector are labelled with the same serial number.

1. screw the lens (3) into the thread of the lens holding fixture(5) entirely.
2. -Slide in mask flat side towards lens  
-Put together marker grooves (13)  
-Insert mask onto magnets (12)  
-Snap magnets (6) in the 3 round hollows on the mask frame.

